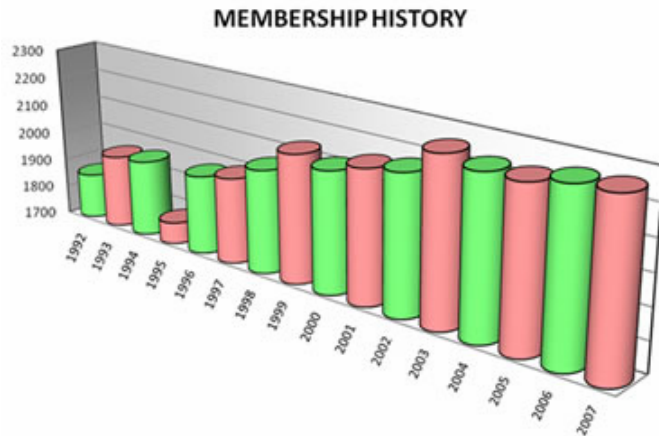


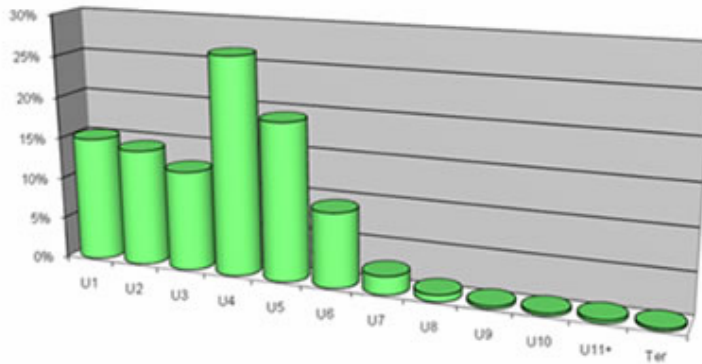
MEMBERSHIP STATISTICS



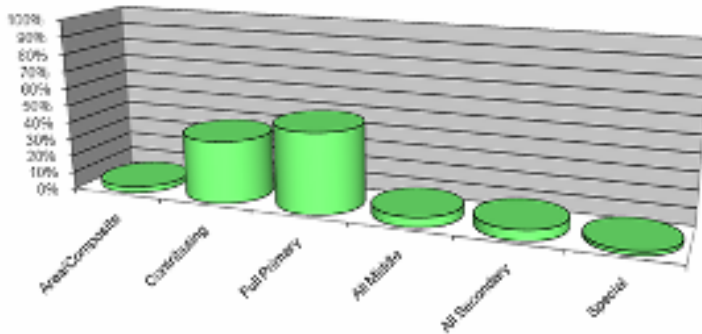
Membership Data (as at 31 Dec)							
1992	1993	1994	1995	1996	1997	1998	1999
1856	1951	1962	1774	1969	1992	2050	2132
2000	2001	2002	2003	2004	2005	2006	2007
2108	2145	2162	2248	2224	2224	2250	2255

Comparison 1999 – 2007 ~ Grades as % of Total Membership									
Grade	U 1	U 2	U 3	U 4	U 5	U 6	U 7+	Other	Totals
1999	15%	15%	11%	27%	22%	9%	1%		100%
2000	14%	15%	11%	27%	24%	9%	1%		100%
2001	14%	15%	12%	27%	22%	9%	1%		100%
2002	16%	16%	11%	27%	19%	9%	2%		100%
2003	16%	16%	11%	27%	19%	9%	2%		100%
2004	16%	15%	12%	26%	19%	9%	3%		100%
2005	15%	15%	12%	26%	20%	9%	3%		100%
2006	15%	15%	11%	26%	20%	9%	4%		100%
2007	15%	14%	12%	26%	19%	9%	4%	1%	100%
Members	337	316	271	590	428	203	90	20	2255
Possible	407	345	290	626	477	261	168	27	2601
Percentage	83%	92%	93%	94%	90%	78%	54%	74%	87%
Non Members	70	29	19	36	49	58	78	7	346

Membership Composition by Grade (Dec 2007)



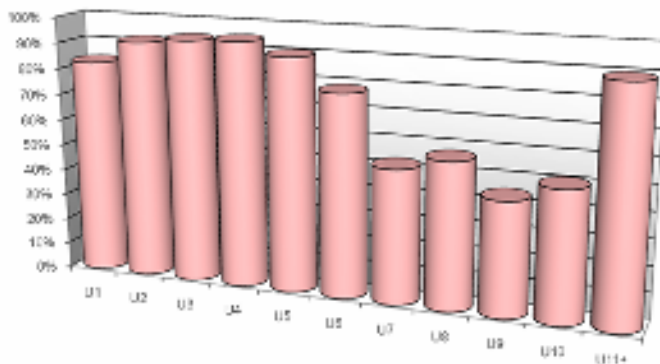
Membership Composition by Type (Dec 2007)



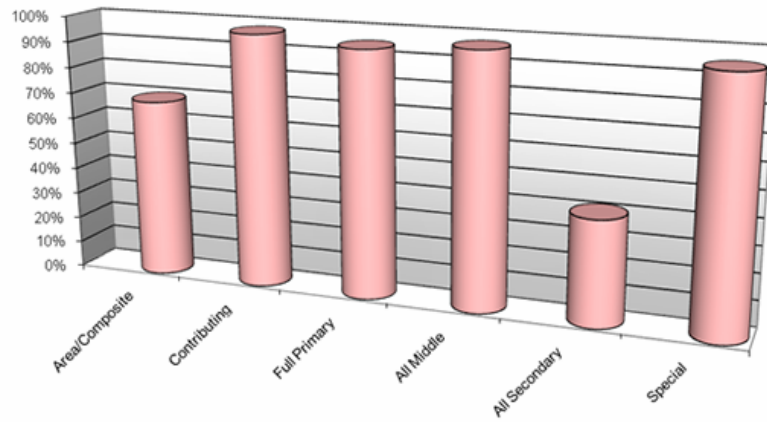
Sector representation as at 31 December 2007... (Dec 2006 comparison)

- 87% of state/integrated New Zealand schools are members (-1%)
- 97% of contributing schools (no change)
- 96% of intermediate/middle schools (no change)
- 94% of special schools (no change)
- 94% of full primary schools (no change)
- 68% of area/composite schools (+6%)
- 40% of secondary schools (no change)

Membership of Grade (Dec 2007)



Membership of Institution Type (Dec 2008)



<i>Subscription Income (GST Inclusive)</i>									
1998	1999	2000	2001	2002	2003	2004	2005	2006	2007
\$279 312	\$401 784	\$433 819	\$439 255	\$440 133	\$455 021	\$451 021	\$456 579	\$461 332	\$506 644